

MIDDLE PARK TOWNHOUSES FOR SALE

Corner of Union Road and Mardross Court, North Albury



Introduction

The luxury townhouses are in Middle Park Estate, on the corner of Mardross Court and Union Road, North Albury, opposite a green reserve land. The estate is approximately 5km from the Albury CBD and the Hume Freeway, and a short stroll to the Lavington CBD, schools, parks and IGA supermarket.

3 townhouses on lots 11 & 12 of the subdivision have been built and sold.

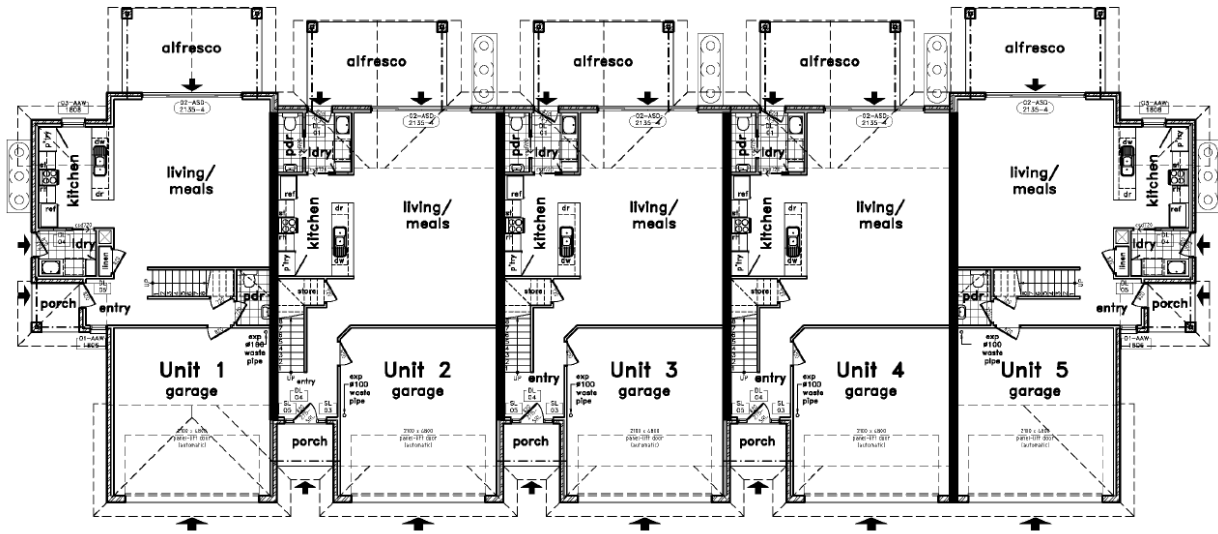
The proposal is to build another 5 with a similar design, on lots 1 to 3, which are currently for sale.

Features

These fabulous homes come complete with;

- 2550mm ceiling height
- 5000lt Rain water tank
- 900mm canopy range hood
- 900mm free standing oven
- Aluminium sliding windows with flyscreens & keylocks
- Auto Opening Panel lift garage door
- Carpets & underlay to all other areas
- Concrete Drive & Path
- Down lights to living areas
- Ducted evaporative cooling
- Ducted gas heating
- Euro style basins to vanities
- Hot water service
- Landscaping and fencing
- Letterbox and TV antennae
- Light fittings throughout
- Pendant light fittings to island bench
- Poly-marble shower bases
- Semi-frameless shower screens
- Service connection
- Stainless Steel Dishwasher
- Stone bench tops to kitchen
- Tiled roof
- Undercover Alfresco
- Vitreous china toilets and cisterns
- Wet & dry area floor tiling
- Window furnishings

Floor Plans



Ground Level

Unit 1 & 5

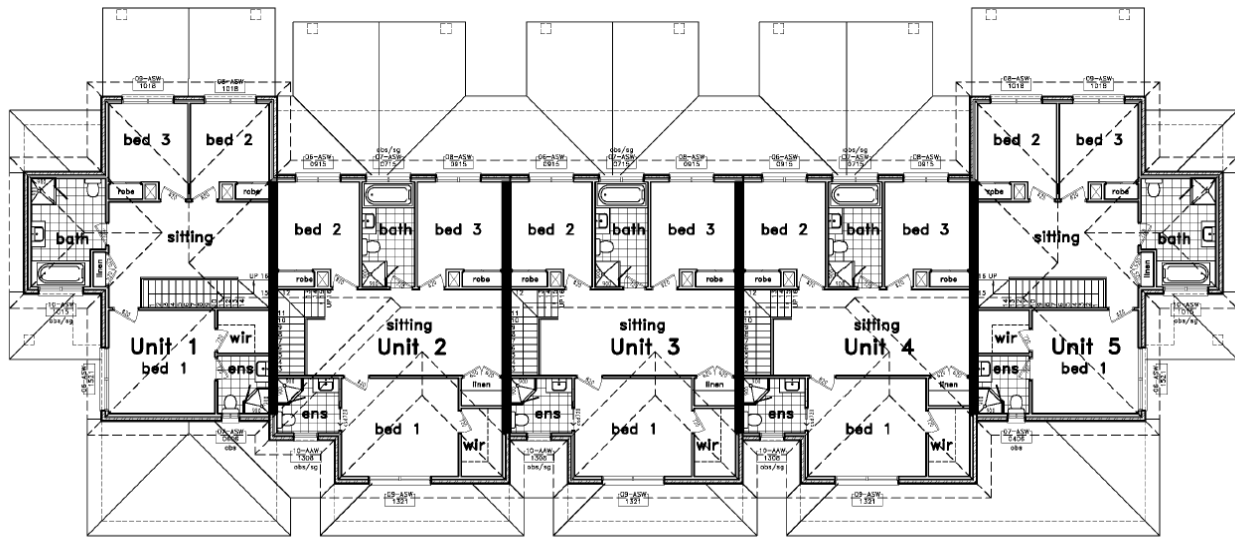
lower living area: 67.2m²
garage area: 38.0m²
porch area: 3.0m²
alfresco area: 15.0m²

Unit 2, 3 & 4

lower living area: 72.5m²
garage area: 36.6m²
porch area: 3.0m²
alfresco area: 15.0m²

Unit 1 & 5

lower living area: 67.2m²
garage area: 38.0m²
porch area: 3.0m²
alfresco area: 15.0m²



First Level

Unit 1 & 5

upper living area: 78.4m²

Unit 2, 3 & 4

upper living area: 83.4m²

Unit 1 & 5

upper living area: 78.4m²

Contact Details

For more information on the Middle Park Townhouses, please contact:

Zauner Construction

P: 02 6025 1988

E: zteam@zauner.com.au